

2MP 12X SMART ZOOM SUPER NIGHT VISION OUTDOOR CAMERA

QUICK INSTALLATION GUIDE



Please read this manual carefully before installation and operation of the product.

Dear Customers!

By selecting this product, you have decided to use a professional device that guarantees highest quality and reliability. We would like to thank you very much for your confidence and kindly ask you to read the following instructions carefully before installation and operation in order to take full advantage of all quality features regarding this product.

CAUTION
RISK OF ELECTRIC SHOCK
DO NOT OPEN

CAUTION
TO REDUCE THE RISK OF ELECTRIC SHOCK,
DO NOT REMOVE THE COVER (OR BACK).
NO USER SERVICEABLE PARTS INSIDE.
REFER SERVICING TO QUALIFIED PERSONNEL.

The lighting flash with an arrowhead symbol, within an equilateral triangle is intended to alert the user to the presence of non-insulated dangerous voltage within the product's enclosure that may be of sufficient magnitude to constitute a risk of electric shock to persons.

The exclamation point within an equilateral triangle is intended to alert the user to the presence of important operating and maintenance (servicing) instructions in the literature accompanying the appliance.

INFORMATION

This equipment has been tested and found to comply with limits for a Class A digital device, pursuant to part 15 of the FCC Rules. These limits are designed to provide reasonable protection against harmful interference when the equipment is operated in a commercial environment. This equipment generates, uses, and can radiate radio frequency energy and, if not installed and used in accordance with the instruction manual, may cause harmful interference to radio communications. Operation of this equipment in a residential area is likely to cause harmful interference in which case the user will be required to correct the interference at its own expense.

WARNING

Changes or modifications not expressly approved by the manufacturer could void the user's authority to operate the equipment.

CAUTION – To prevent electric shock and risk of the fire hazards

- Do NOT use power source other than that specified.
- Do NOT expose this appliance to rain or moisture.

Trademarks

All names used in this manual for hardware and software are probably registered trademarks of respective companies.

This installation should be made by a qualified service person and should conform to all local codes.

Precautions

- Please read the manual carefully before the installation in order to set up the camera correctly and to obtain the best picture quality.
- Please keep the manual in good condition for your future reference and service application.
- Installation and services should be only carried out by an authorized personnel according to local safety regulations.
- If any liquid or solid matter gets into the housing, immediately disconnect the camera from power supply and have it checked by your authorized dealer before reusing.
- Avoid installing the camera at extremely hot or cold places.
- If you are not a certified person, never try to dismantle the camera. To avoid electric shock, never remove the screws or covers. There are no parts inside that need maintenance by the user. All maintenance should be carried out by qualified personnel.
- Avoid installing the camera at a place of high humidity.
- Avoid installing the camera at the place exposed to gas or oil.
- Keep the top glass of the lens always clean in order to obtain the best picture quality all the time. Be careful not to be stained by fingerprint.
- Don't face the camera directly toward sunlight or sunlight reflecting area. IMAGE SENSOR may go defective at this condition.
- Please give a special attention to keep the unit from dangerous drop or external shock during the process of transportation or handling.
- Never try to touch the camera in wet hand. It may cause an electric shock.
- Do not expose the camera to radioactivity. It causes a serious damage on the IMAGE SENSOR.

Limitation of liability

This publication is provided "AS IS" without warranty of any kind, either express or implied, including but not limited to, the implied warranties of merchantability, fitness for any particular purpose, or non-infringement of the third party's right. This publication could include technical inaccuracies or typographical errors. Changes are added to the information herein, at any time, for the improvements of this publication and/or the corresponding product(s).

Disclaimer of warranty

In no event shall seller be liable to any party or any person, except for replacement or reasonable maintenance of the product, for the cases, including but not limited to below:

- (1) Any damage and loss, including without limitation, direct or indirect, special, consequential or exemplary, arising out of or relating to the product;
- (2) Personal injury or any damage caused by inappropriate use or negligent operation of the user
- (3) Unauthorized disassemble, repair or modification of the product by the user;
- (4) Inconvenience or any loss arising when images are not displayed, due to any reason or cause including any failure or problem of the product;
- (5) Any problem, consequential inconvenience, or loss or damage, arising out of the system combined by the devices of third party.
- (6) Any claim or action for damages, brought by any person or organization being photogenic subject, due to violation of privacy with the result of that surveillance-camera's picture, including saved data, for some reason, becomes public or is used for the purpose other than surveillance.

1. PRODUCT OVERVIEW

KEY FEATURES

- 2 Mega pixel 1/2.8" SONY progressive scan CMOS image sensor for excellent image quality (Exmor)
- 5~60mm Motorized Megapixel Lens
- 50M IR Beam Distance
- Smart Focus Function
- Multi Streaming of H.264 and MJPEG
- Supports image resolution up to 30fps @ 1920x1080 (FHD)
- Supports CBR and CVBR modes
- Controllable frame rate
- Privacy Masking up to 8 area
- WDR using frames of Long and Short exposure
- Supports Defog, 2D+3DNR, Sense-Up
- Digital PTZ
- 12VDC / IEEE802.3af POE
- Conformant with ONVIF
- Includes Windows based IP Installer and license-free 16 channel NVR (Network Video Recorder) software

1. PRODUCT OVERVIEW

SPECIFICATION

Classification		ELIP-3000N
Image Pickup	Image Sensor	2.0 Megapixel 1/2.8" Sony progressive scan CMOS image sensor
	Total Pixels	1952(H) x 1116(V) 2.18 Megapixel
	Effective Pixels	1944(H) x 1104(V) 2.14 Megapixel
	S/N Ratio	50dB
	Min. Illumination	0Lux (IR On)
	IR Distance	50M
	Day & Night	ICR Filter Changer
Video	Lens	5~60mm Motorized Megapixel Lens
	Video compression	H.264 High profile @ Level 4.0, Motion JPEG
	Resolution	Max 1920 x 1080
	Frame rate	H.264 : 30fps @ 1920 x 1080P MJPEG : 30fps @ VGA
	Bit rate Control	Dual Stream : H.264, MJPEG H.264: CBR / CVBR
	Image setting	Day & Night
		Auto White Balance
		Auto Exposure
		Privacy Mask
		WDR (Off / Low / Middle / High)
	Output (Optional)	Defog (On / Off)
		Smart IR (Off / 0~16)
		3DNR (On / Off)
		BNC x1, 1.0Vp-p, 75 ohm Composite Video, NTSC / PAL
	Alarm In / Out (Optional)	In : 1, Out : 1
Network	Security	Password protection
		User access log
		HTTPS encryption
	Protocol	HTTP, HTTPS, FTP, SMTP, UPnP, DNS, DDNS, NTP, RTSP, RTP, TCP, UDP, ICMP
Physical	Intelligent video	Motion detection with 4 x 3 blocks
	Power source	DC 12V / 1.5A, PoE (Power over Ethernet): 802.3af
	Storage (Optional)	Micro SD Slot
	Power Consumption	Max 11W (IR On)
	Net Weight	2600g
	Status LED	N/A
	Reset Button	Factory Reset
Environment	Dimension (mm)	104.3(Ø) x 137.3(H) x 333.3(D)
	Operating Temperature	-10°C ~ 50°C
	Storage Temperature	-20°C ~ 60°C

※ Specifications are subject to change without prior notice for improvement.

2. NAME AND FUNCTION OF EACH PART

2.1 PACKAGE CONTENTS

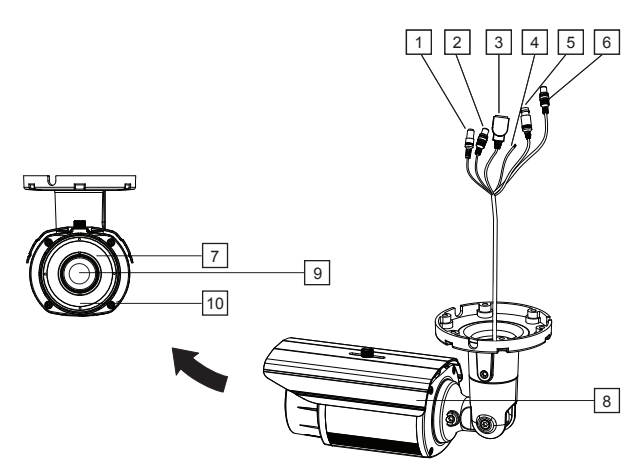
2.1.1 ELIP-3000N

APPEARANCE	DESCRIPTION
	IP Camera x 1
	Installation Guide x 1
	Tapping screws x 3
	Plastic anchor x 3
	L-Wrench x 1
	CD x 1

2. NAME AND FUNCTION OF EACH PART

2.2 NAME AND FUNCTION

2.2.1 ELIP-3000N



NO.	ITEM	DESCRIPTION
1	Audio-In	Audio in (RED)
2	Audio-Out	Audio out (WHITE)
3	Network and POE Connector	PoE (Power over Ethernet) and Lan cable
4	Sensor In / Alarm Out	Sensor In / Alarm out
5	BNC	Analog Video Out (YELLOW)
6	Power Connector	DC12V
7	IR LED	Infrared LED
8	Sunshield	
9	Lens	Motorized Megapixel Lens
10	Illuminance sensor	Control IR LED by sensing light

3. INSTALLATION & CONNECTION

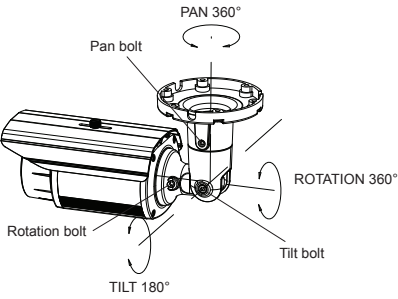
3.1 AXIS ADJUSTMENT

◆ 3-Axis mounting mechanism

- Rotating axis up to 360 degree
- Panning axis up to 360 degree
- Tilting axis up to 180 degree

① Pan 360°
Slightly loosen Pan bolt then adjust pan of the camera using a serration on the bracket and tighten the bolt firmly.

② Tilt 180°
Slightly loosen Tilt bolt then adjust tilt of the camera using a serration on the bracket and tighten the bolt firmly.

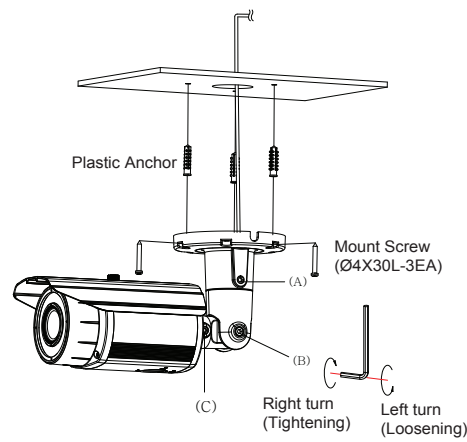


③ Rotation 360°
Slightly loosen Tilt bolt then adjust rotation of the camera using a serration on the bracket and tighten the bolt firmly.

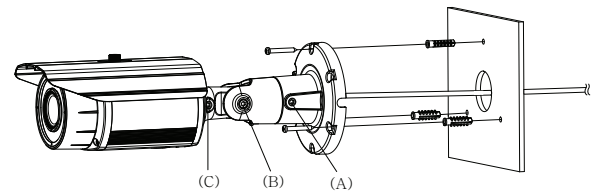
3. INSTALLATION & CONNECTION

3.2 HOW TO MOUNT TO CEILING / WALL

< Ceiling Mount >



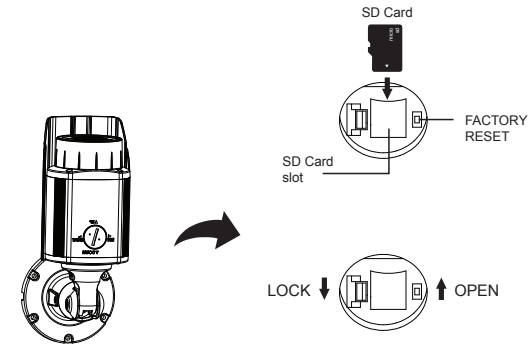
< Wall Mount >



- ① Drill three screw holes on the wall or ceiling plate to fix three anchors (supplied) in the holes.
- ② Fix the plastic anchors in the holes.
- ③ Position the mounting bracket on the screw points.
- ④ Fix the mounting bracket by tightening the screws.
- ⑤ Slightly loosen bolt (A), (B) then adjust TILT (180°) and PAN (360°) of the camera and tighten the bolt firmly.
- ⑥ Slightly loosen bolt (C) then adjust ROTATION (360°) of the camera and tighten the bolt firmly.

3. INSTALLATION & CONNECTION

3.3 HOW TO INSTALL A MICRO SD CARD



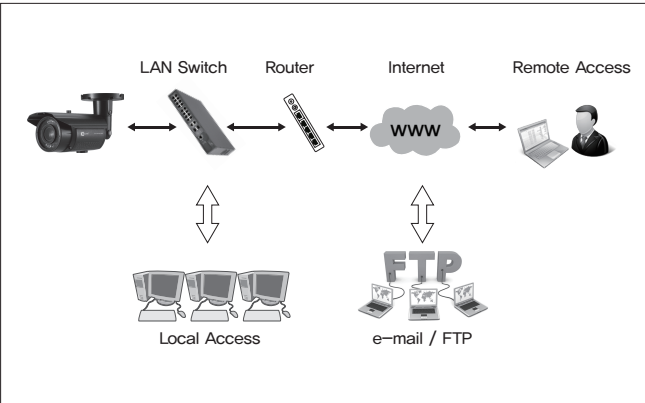
- ① Open the cap on the bottom of the camera by turning it anticlockwise. And Slide the upper part of Micro SD Card slot horizontally in the direction shown by the "OPEN" arrow ("Slot is a hinge type").
- ② Insert a Micro SD Card to the slot.
- ③ Slide the upper part in the direction shown by the "LOCK" arrow.
- ④ Close the cap in a clockwise direction

<Caution>

- a. Please turn the power off before inserting or removing a Micro SD card.
- b. Make sure to close the cap carefully and quickly to keep it water-tight and anti-fog.

3.4 INSTALLATION EXAMPLE

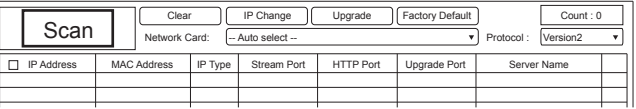
3.4.1 Installation Example



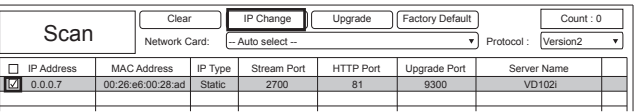
3. INSTALLATION & CONNECTION

3.4.2 Connecting Network

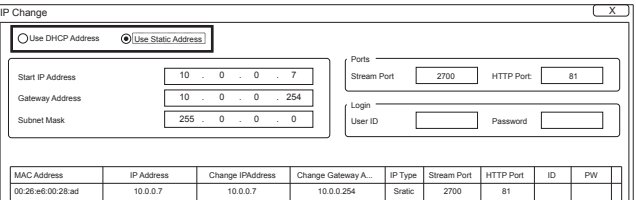
- 1) Run IPScan Utility program in the packaged CD.
- 2) Click "Scan" button. Once IPScan Utility program scanned, the panel shows every camera or video server connected on the local network.



- 3) The MAC address can be found on the label of the camera or video server.
- 4) From the cameras or video servers listed, select one and click "IP Change to assign a new IP address.

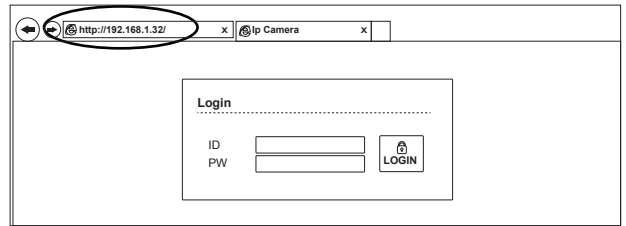


- 5) Select DHCP or STATIC, then change IP address. Default ID and password are "admin" and "1234" respectively.



3.4.3 Accessing the Camera or video server's Homepage

- 1) After you assign IP address to your IP camera or video server and enter that camera or video server address on the Web Browser, you will be connected to the login page of the camera or video server as shown below.



- 2) Enter a ID (username) and password to access the camera or video server. The default ID and password are "admin" and "1234".
- 3) The first time you login to the camera or video server using ActiveX, you are notified that a required ActiveX control is required. You need to allow the installation of ActiveX by clicking "Yes". It is normal for this process to take up to 30 seconds.

※ For more information, see the manual of IP camera or video server in the packaged CD.

4. Dimension (mm)

